

The most complete image analysis solution



VERSION
8.0

CLEMEX VISION PE

Version 8 of Clemex Vision PE is now available for purchase

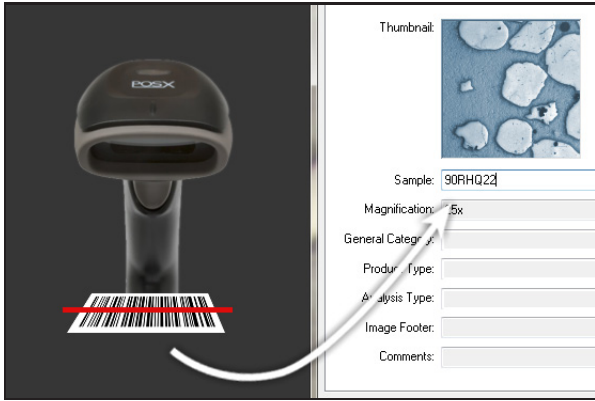
Stay updated

As a subscriber to the ClemexCare service plan, you are entitled to all product updates released by Clemex.

Your input is appreciated

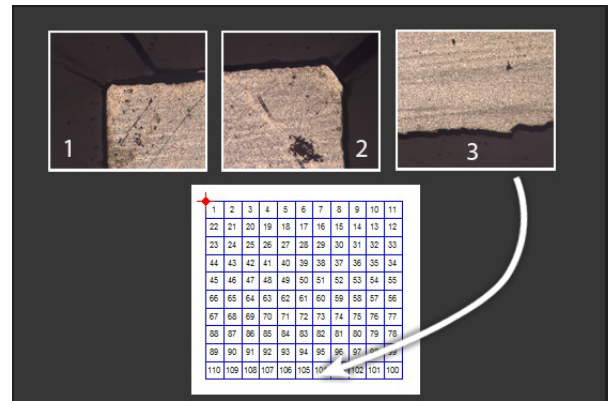
Thanks to our customers' comments, Clemex products have evolved to better suit the needs of end users across the world.

Product Features



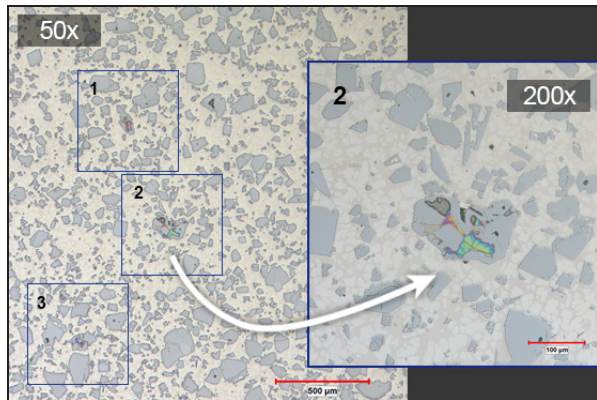
Barcode Scanner Use

Barcode use is becoming more common-place in laboratories. The integration of this technology into automated sample processing by image analysis will give you an advantage over more time consuming and error-prone manual sample name input.



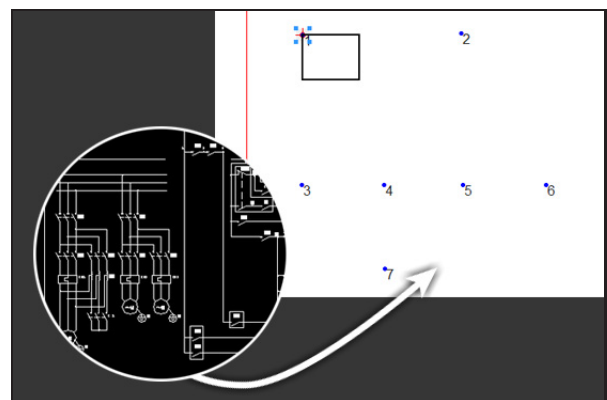
Define Region

The system defines a region to analyze based on three coordinates set by the user. A stage pattern (circular / rectangular) is automatically created to encompass the whole region. An automatic plane is created, meaning all points within the region to be analyzed will be in focus.



Smart Patterns for More Precision

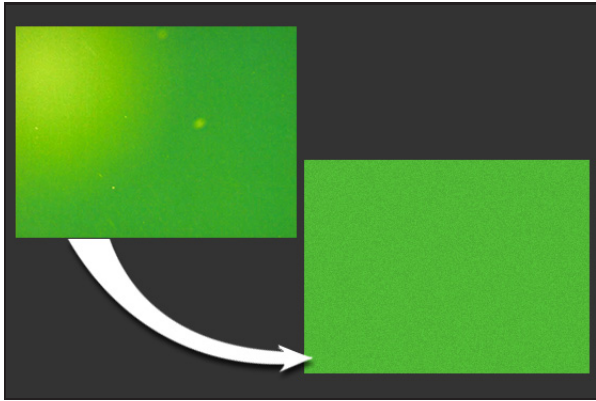
The system saves time by scanning the entire sample at low magnification to detect areas which need to be analyzed with greater precision in a second step. A custom stage pattern is automatically created to analyze the objects of interest at a higher magnification.



Stage Pattern from Coordinates

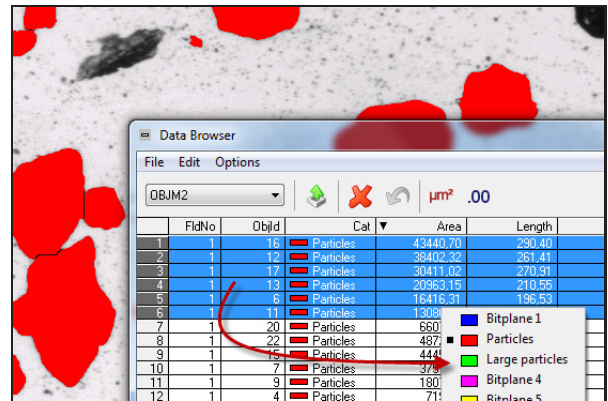
Use your existing CAD files to export x and y coordinates of the features of interest on your sample. The coordinates are imported into our software and a stage pattern with the right number of fields is created automatically to cover required areas only.

Product Features



Automatic Shading Corrector

Our software's unique fully automated shading correction feature ensures even illumination for images captured using the system's camera. The image on the left was captured without a shading corrector. A pseudo-color LUT was applied to show the differences in gray levels.



Change Category

After initial object detection and measurement, you may wish to manually transfer some of the objects into a different category. This is done by selecting the features in the Data Browser and sending them to the bitplane of your choice.



Motorized microscopes

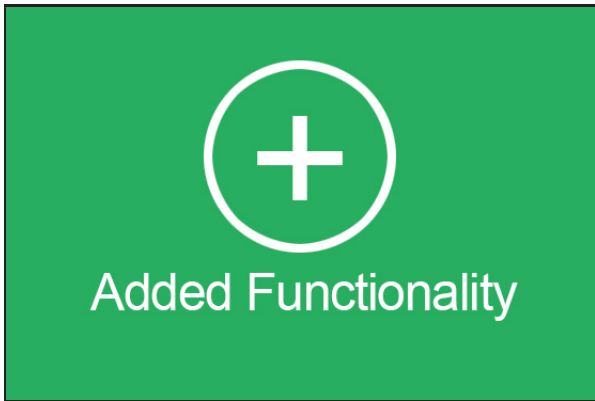
Clemex software lets you control the light, aperture and motorized turret on a number of Leica, Olympus and Nikon motorized microscopes.



USB3 Compatible Cameras

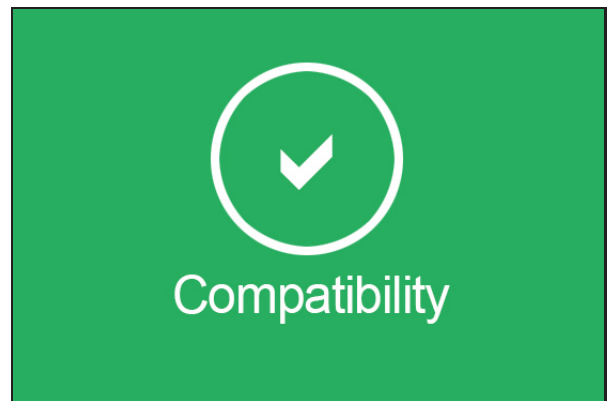
Reduce your analysis time with a new high resolution camera. These compact and robust cameras use the latest SuperSpeed USB3 technology for fastest image delivery. They provide excellent quality high-speed images with zero blur.

Product Features



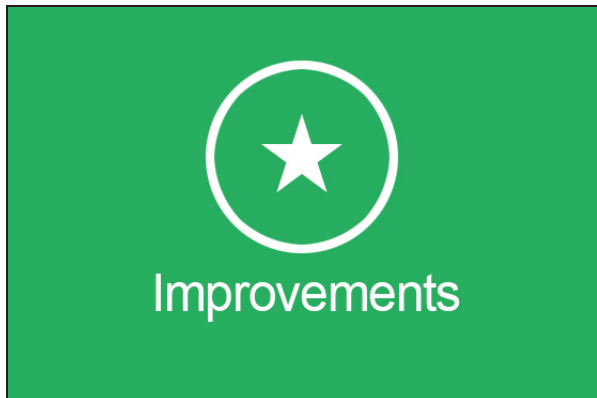
Added Functionality

Analyze up to six samples with the same routine and six individual reports • Send a group of objects to a different category in the Data Browser • Add a Comment Box instruction during gray or color thresholding



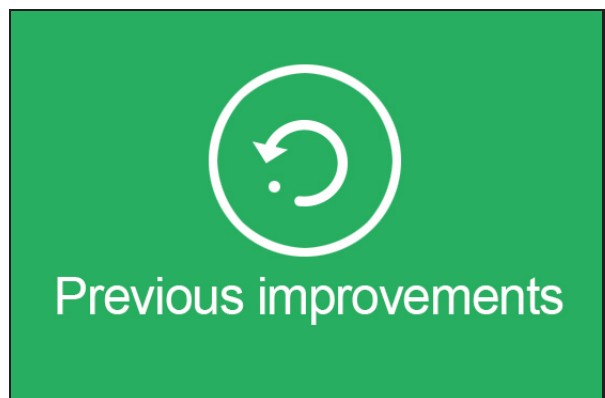
Compatibility

Windows 8 compatible • Reports generated with Excel 2012-2013 • New compatible motorized Nikon and Olympus microscopes • USB3 camera compatible • Updated ASTM E112-13 (Grain Size)



Improvements

Mosaic memory improvement (64 bits) • Manual mosaic made simple • Improved Auto Gray Threshold algorithm • Long name allowed for bitplanes • Reduced image size for lighter reports



Previous Improvements (v7.0)

Conditional Instructions • Added compression settings when saving JPEG images • Sort on multiple columns in the Data Browser • New Object and Field measures • Ability to move all stage patterns at once

A Commitment to Excellence in Imaging

We are experts in complex and simple microscopic image analysis applications in:

Raw Materials

Powders

Metal Parts

Contaminants

Custom Applications

CLEMEX

www.clemex.com

Contact:

Clemex Technologies inc.

800 Guimond, Longueuil, QC, J4G 1T5, Canada

Telephone: 1.888.651.6573

info@clemex.com - www.clemex.com

© Copyright Clemex Technologies Inc. 06-2015