

RSDMAG

MAGNETIC CLAMPING BASE

FROM PORTABLE
TO BENCH-TOP

ASTM E-18
ASTM E-10

ROCKWELL
BRINELL



RSD MAG

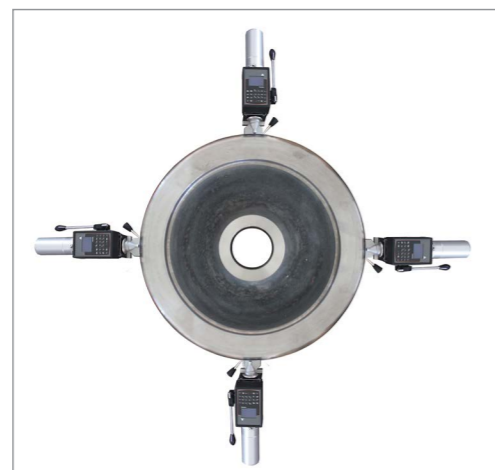
AFFRI® RSDMAG is the first real standardized portable hardness tester conform to Rockwell and Brinell standards **ASTM E-18, ASMT E-10** and **ISO 6508, ISO 6506**.

The AFFRI magnetic portable hardness tester solves all types of problems. It can be used as a conventional hardness tester or as a portable system for on-site testing when test pieces are too large or too heavy for a bench hardness tester. The load cell inside has no impact force, while the AFFRI vertical movement permits a fully automatic test cycle. This is a true Rockwell and Brinell tester that conforms to any ASTM or ISO standard.

The AFFRI RS-MAG is completely uninfluenced by direction so that it is operative up to 360° degrees of positioning. It is not affected by any external source of vibration, and it does not need to be leveled.

LCD graphic display for multi scale vision, simultaneous conversion on many scales, tolerance setting, statistic, temperature measure, depth indentation thickness, complete statistic, histogram, memory data. RS 232 C and USB 2 output for printer.

The AFFRI system protects the indenter from accidental shock before and during testing, thus increasing the life of the indenter, especially for diamond cone 120° Rockwell C test.



USER FRIENDLY

Pulling one single start lever the result will appear in few seconds. It is so simple and easy to use that there is no need for any particular preparation by the operator.

1. Identify the test area and place the hardness tester on the test sample
2. Locking the magnetic lever the tester will strongly adhere to the test piece and remain clamped for the entire test cycle
3. Sliding 50 mm the indenter take contact with different surfaces or misaligned surfaces
4. Start the test and in 4 seconds the result will appear on the display scale or deal gauge



HARDNESS TESTERS



RSDMAG/30-D2
RSDMAG/30-D4



RSDMAG/50-D2
RSDMAG/50-D4



RSDMAG/55-D2
RSDMAG/55-D4



RSDMAG/70-D2
RSDMAG/70-D4



RSDMAG/80-D2
RSDMAG/80-D4

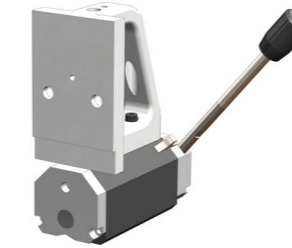
HARDNESS TESTERS MODEL CODES		
	D2 Multiloads: From 60 to 187.5 kgf	D4 Multiloads: From 15 to 45 kgf
RSDMAG/30	06010130	06040130
RSDMAG/50	06010150	06040150
RSDMAG/55	06010155	06040112
RSDMAG/70	06010113	06040113
RSDMAG/80	06010180	06040180

SPARE PARTS/ACCESSORIES

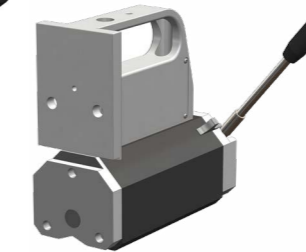


RSDMAG D2
Cod. 06013001
Tester head
(60 to 187.5 kgf)

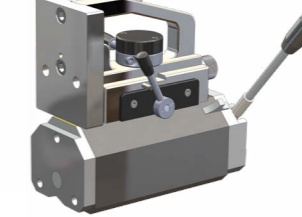
RSDMAG D4
Cod. 06043001
Tester head
(15 to 45 kgf)



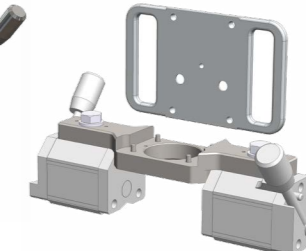
SMX30 (Cod. 06001001)
300mm / 11.8" magnetic base
for HR/HB measures up to
20mm / 0.8" sample's thickness



SMX50 (Cod. 06001002)
500mm / 19.7" magnetic base
for HR/HB measures less than
20mm / 0.8" sample's thickness



SMX55 (Cod. 06001002-b)
Magnetic base with 10mm / 0.4"
horizontal stroke sliding head
for multi indentation



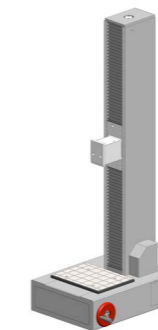
SMX70 (Cod. 06001003)
Double magnetic clamping
base for big or small diameters
round shape samples



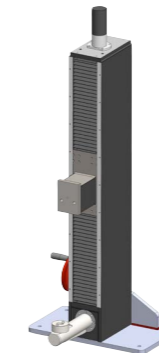
SMX80 (Cod. 06001004)
Chain clamping base for non
ferrous sample

Combine the RSDMAG head with the base that better fit with the surface's shape geometry of your test sample.

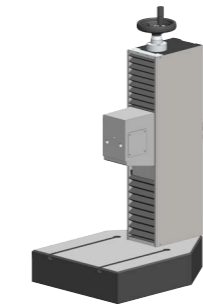
The RSDMAG head (Cod. MEC025.06003001) can be assembled, as it is, on any of our manual hardness tester's stand supports (206/330/903/331).



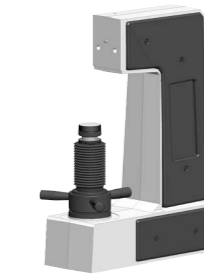
903RSD (Cod. 90311001)
Bench support for RSDMAG head.
Big base for big or small samples.
700mm of vertical stroke or more.



331RSD (Cod. 03101001)
Bench support for RSDMAG head.
Base for ring shape samples.
700mm of vertical stroke or more.



330RSD (Cod. 90200001)
Bench support for RSDMAG head.
Big base for big or small samples.
300mm of vertical stroke.



206RSD (Cod. 90000001)
Bench support for RSDMAG head.
Elevating screw. For small samples.
215mm of vertical stroke.



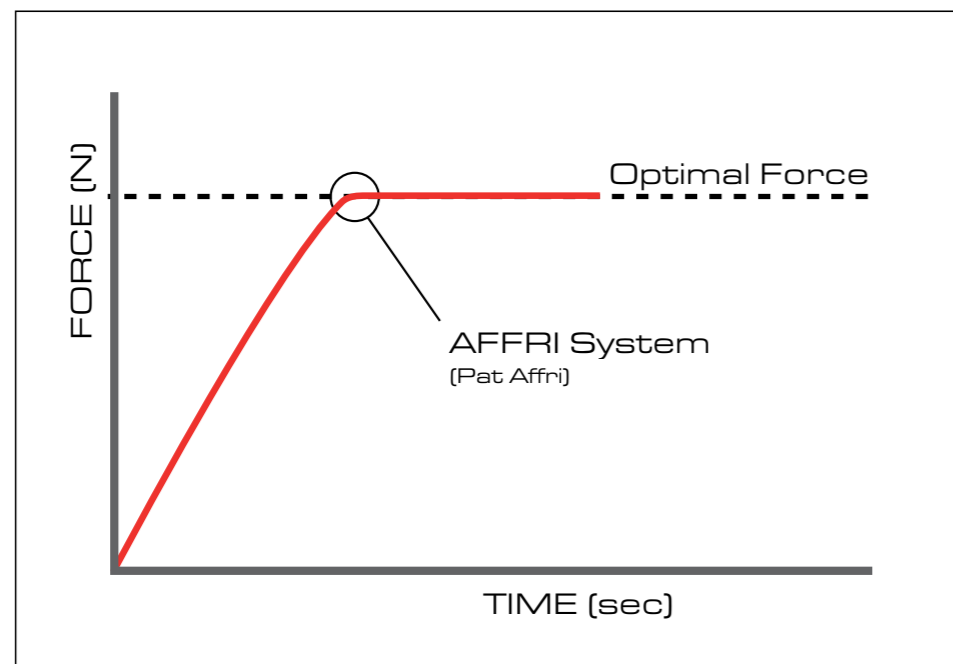
670H (Cod. 060A1002)
Bench support for magnetic RSDMAG.
390mm/15.3" height capacity
232mm/9.1" depth capacity



460L (Cod. 060A1001)
Bench support for magnetic RSDMAG.
180mm/7.1" height capacity
204mm/8" depth capacity

RSD MAG

LOAD CELL TECHNOLOGY: THE FIRST TEST RESULT IS CORRECT AND ABSOLUTE



The exclusive Affri latest generation of load cells control load forces, which are automatically programmed and controlled at each test assuring perfect linearity in every range eliminating the problems associated with traditional dead weight testers. The force by load cell assure absolute accuracy at all test conditions without any equal in the world. Results are not affected by any structural deflection, misalignment or vibration. The system can also operate in an inclined position. The R & R. data is at the top of its class and not surpassed by any other competitor under the same test conditions.

670H - 460L

FROM PORTABLE TO BENCH-TOP



Combine the RSD MAG tester with two different size of stand support in order to have a regular bench top tester based on your needs.



Easy and safe measurements on samples with difficult geometry



50 mm vertical stroke for measuring head and indenter

RSD MAG

Made by:

OMAG di AFFRI D. S.r.l.

Via M. Tagliaferro, 8
I-21056 INDUNO OLONA - CEE (VA) - ITALY
Tel. +39 0332 200546
Fax +39 0332 203704
info@omagaffri.com

Europe/Asia:

AFFRI®

Via M. Tagliaferro, 8
I-21056 INDUNO OLONA - CEE - (VA) - ITALY
Tel. +39 0332 201533 +39 0332 206289
Fax +39 0332 203621
info@affri.com - www.affri.com

America:

AFFRI Inc.

111 S. Lombard Rd Unit: #4
ADDISON, IL 60101 - USA
Tel. 224 374 0931 - 630 303 1588
sales@affriusa.com
www.affri.com

	RSD MAG D2	RSD MAG D4
Accuracy	Better than 0.5 %	
Temperature Range	From 10 °C to 35 °C	
Data Output	RS 232 C (USB as option)	
Power Supply	6 V + Charger	
Principle of Operation	Dynamometric load Cell	
Preload	29.42 N (3 kgf) OR 98.07 N (10 kgf)	
Force Range	Rockwell 588.4 - 980.7 - 1471 N (60 - 100 - 150 kgf) Brinell 98.07 - 612.9 - 1226 - 1839 N (at request 2452 N) (10 - 62.5 - 125 - 187.5 kgf (at request 250 kgf) Vickers 98.07 - 588.4 - 980.7 N (10 - 60 - 100 kgf)	Rockwell 147.1 - 294.2 - 441.3 N (15 - 30 - 45 kgf) Brinell 153.2 - 294.2 - 306.5 N (15.625 - 30 - 31.25 N) Vickers 29.42 - 147.1 - 294.2 N (3 - 15 - 30 kgf)
Feasible Tests	Rockwell HRC A - D - B - F - G - L - M - R Brinell HB 30 - HB 10 - HB 5 - HB 2.5 MPa (F/D ²) Vickers HV10 - HV60 - HV100	Superficial Rockwell HRN - HRT Brinell HB 30 - HB 5 - HB 2.5 MPa (F/D ²) Vickers HV3 - HV15 - HV30
Standards	ISO 6506 / ISO 6508 / ASTM E-18 / ASTM E-10 / ASTM E103	
Indenter Stroke	50 mm / 2"	
Magnetic Support	100 x 50 mm (standard)	
Fields Of Use	Tests in laboratory or in loco on tubes, profiles, valves bulky or small pieces. For all metals: iron, steel, tempered steel, cast iron, brass, aluminium, copper and metal alloys with a more than 0.6 mm thickness. Heat treatment, hardening, nitriding, cementation and hardfacing with less than 0.6 mm depth (RSD MAG D4).	
Packing Weight	35 kg	
Packaging Measurements	50 x 40 x 60 cm	

	460L (Stand support for RSDMAG)	670H (Stand support for RSDMAG)
Height capacity	180 mm / 7.1"	390 mm / 15.3"
Height capacity	204 mm / 8.0"	232 mm / 9.1"